

NMJC Planning Update

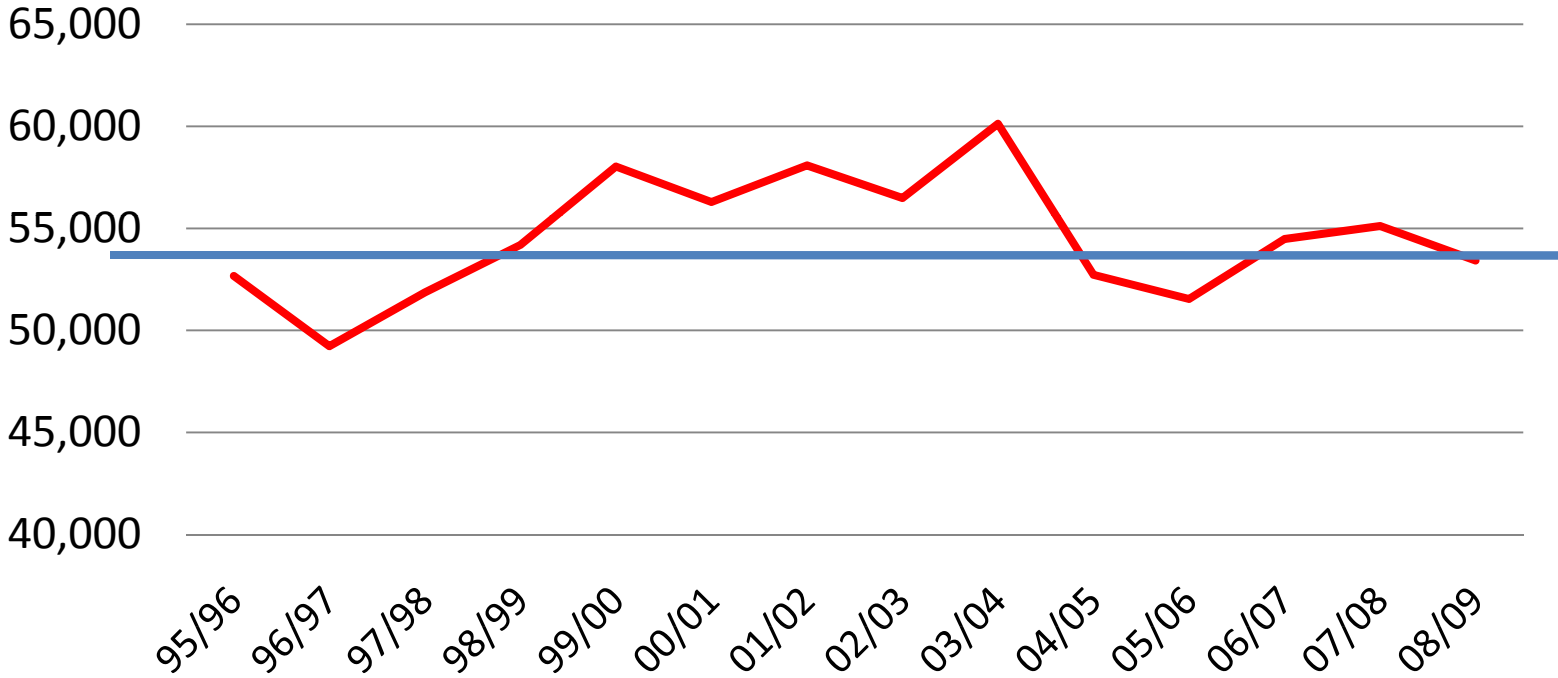
Board Budget Work Session

April 9, 2009

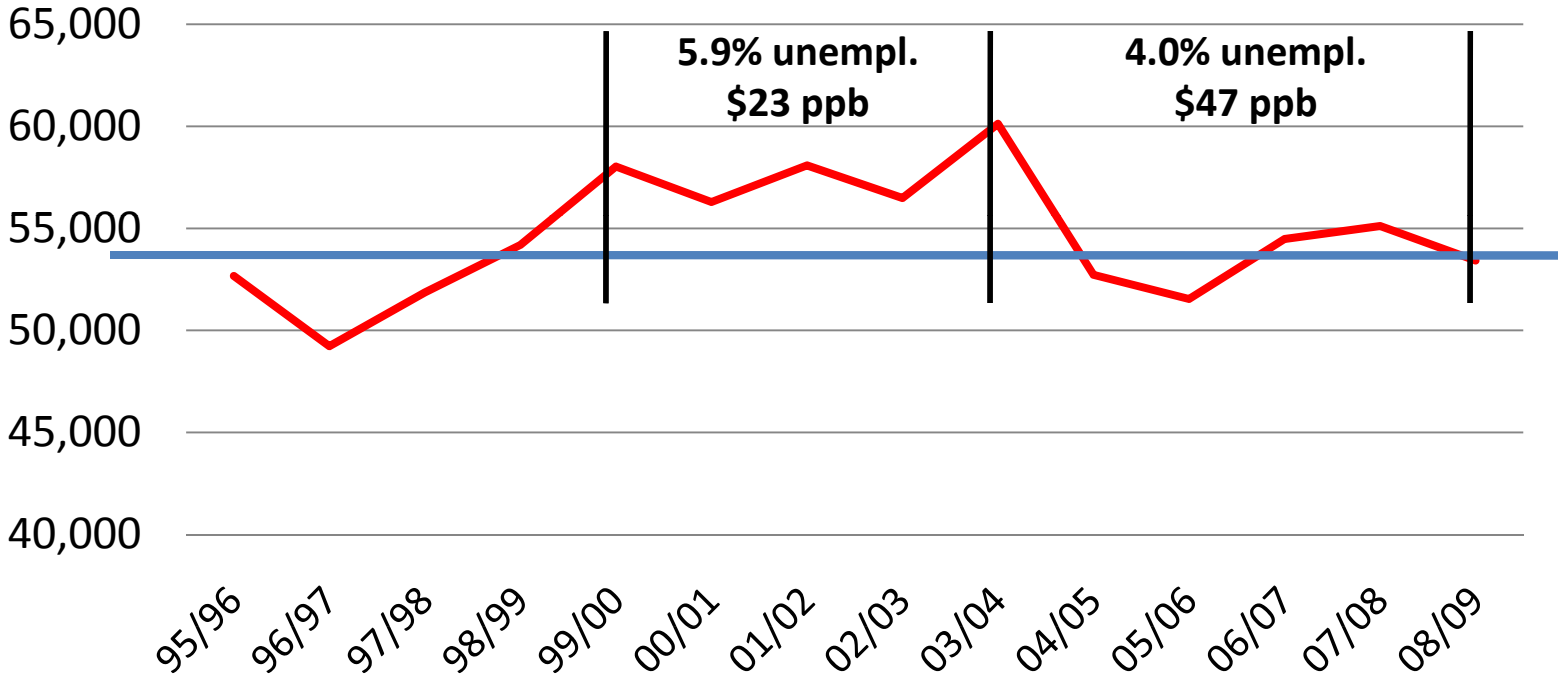


General Trends and Institutional Demographics

NMJC Student Credit Hours 1995-2009



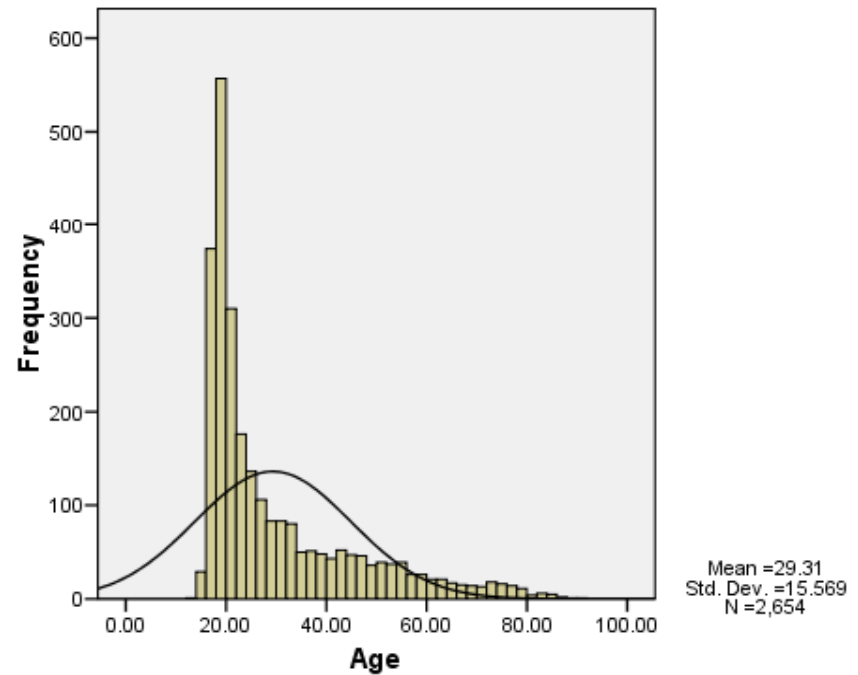
NMJC Student Credit Hours 1995-2009



Who are NMJC Students?



- 61% are women
- 82% are in-district residents
- 28% are full-time students
- 23% are dual enrollment students
- 37% are Hispanic
- 50% are White
- 29.3 is the average age
- Half are <22 years old
- 19 are over 80 years old
- 27% are first-time freshmen

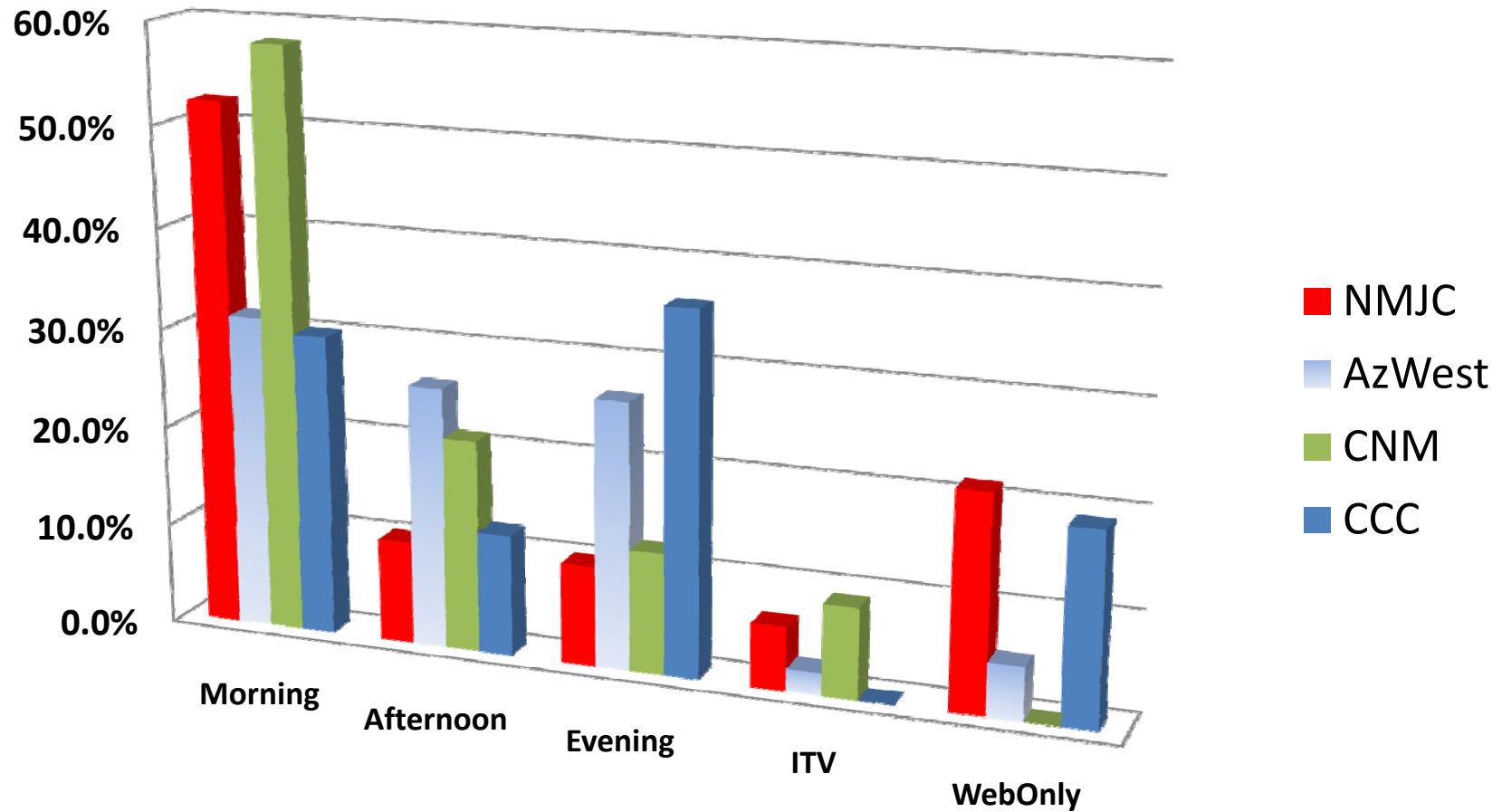


NMJC Employment Data

	Support Staff	Professional Staff	Faculty	Part-time Staff	Adjunct Faculty
Employed	102	81	73	69	49
Turnover* 4 yr. ave.	12.7%	13%	12.3%	16.3%	
Turnover* 4% unempl.	5.8%	9.8%	10.9%	5%	
Ave. Service	6.4 yrs	6.6 yrs	6.8 yrs		

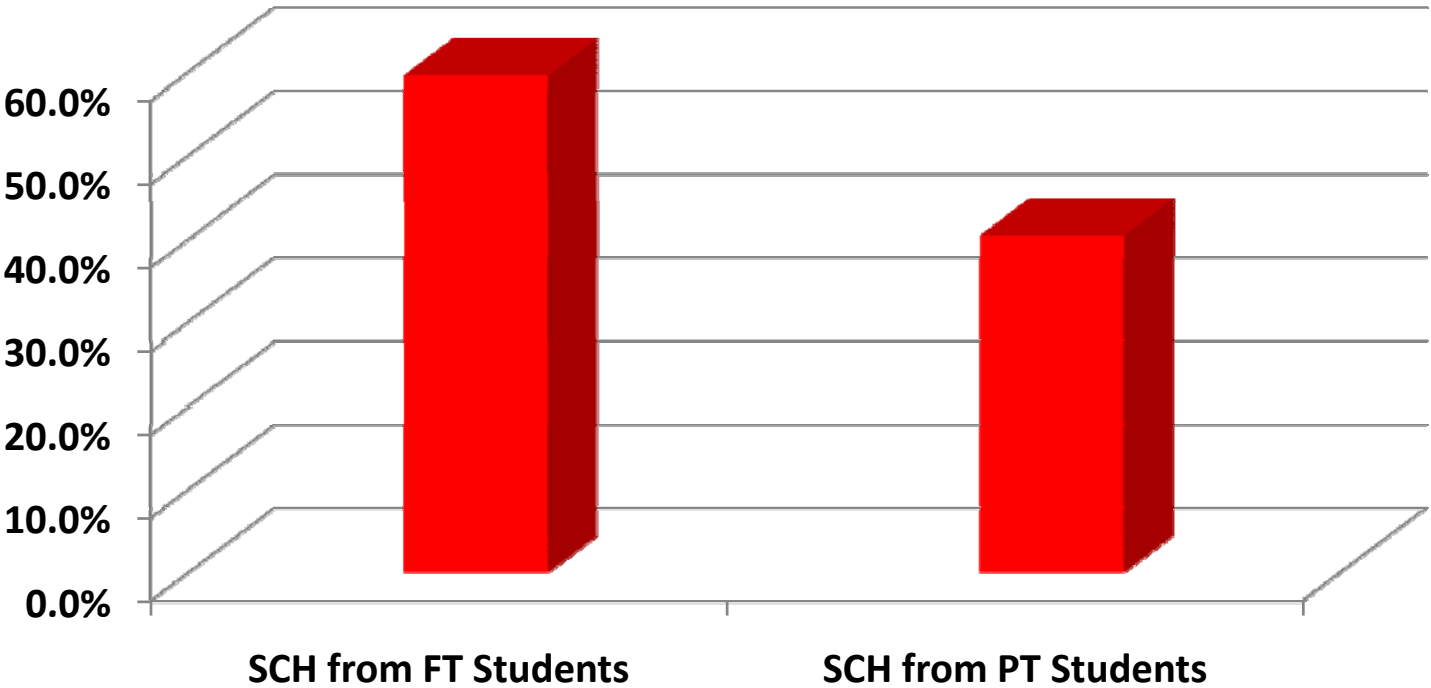
*Turnover rates are estimated

SCH Distribution by Time of Day

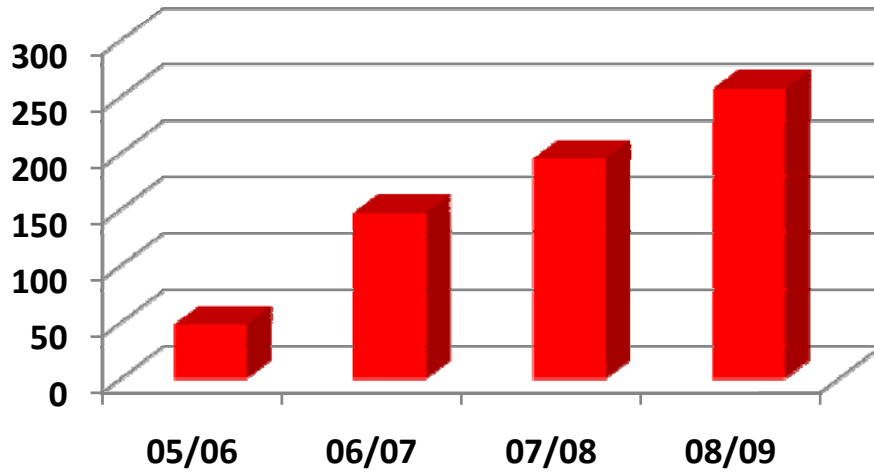


Student Credits Hours FT vs PT

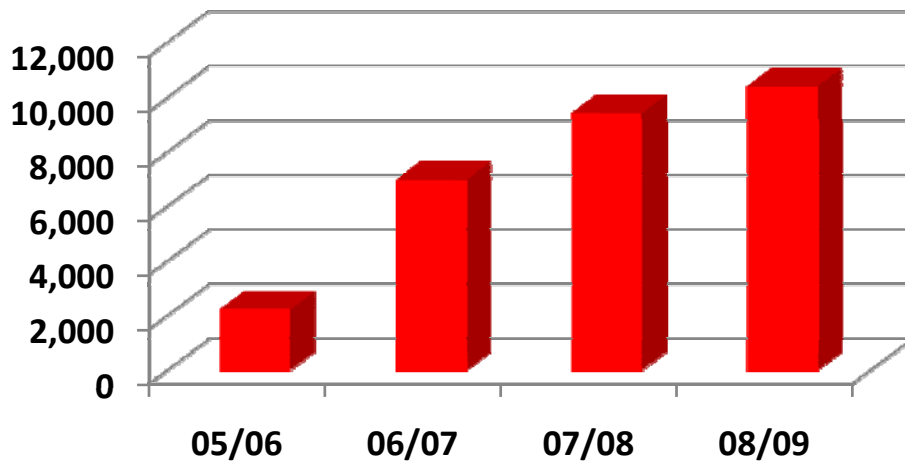
Spring 2009



Internet Classes Offered

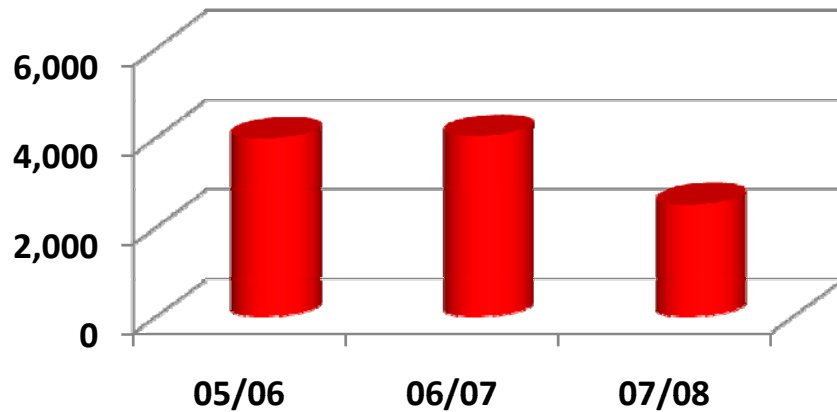


Student Credit Hours from Internet Classes



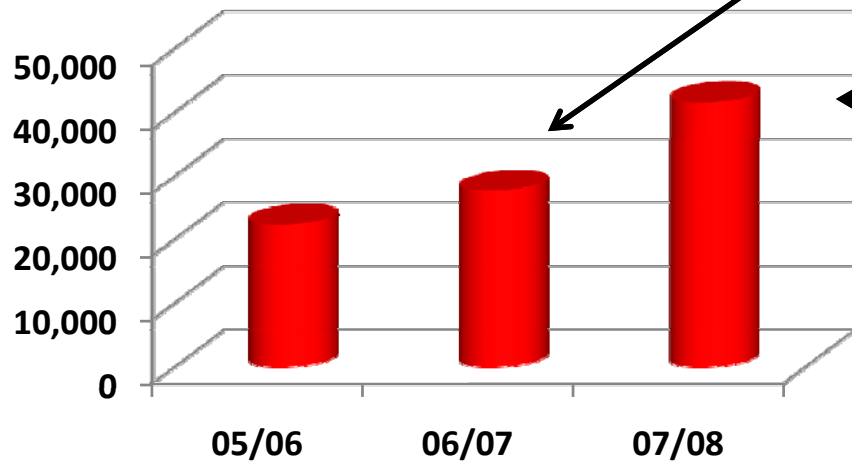
Distance education first identified as a priority in the 1999/2000 Strategic Plan

Workforce Non Credit Training Clients



← Shift of clients to credit status

Workforce Training Non Credit Contact Hours

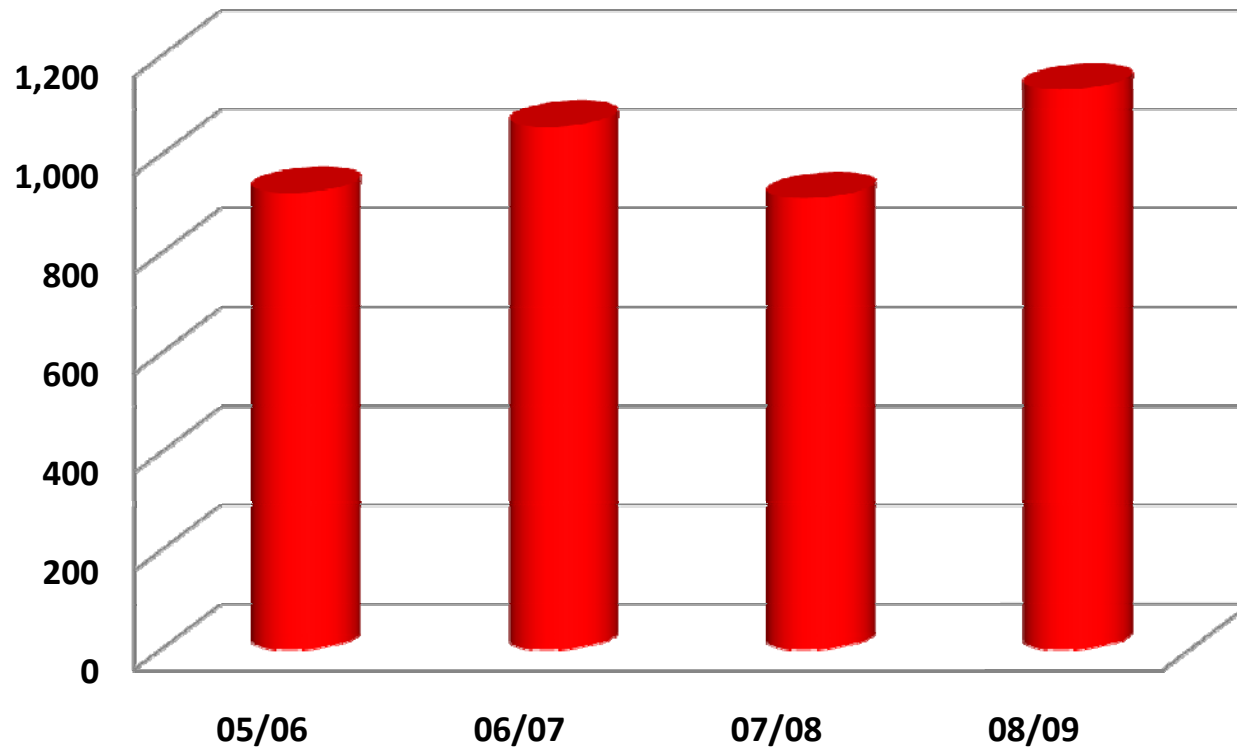


Training & Outreach Staff Established

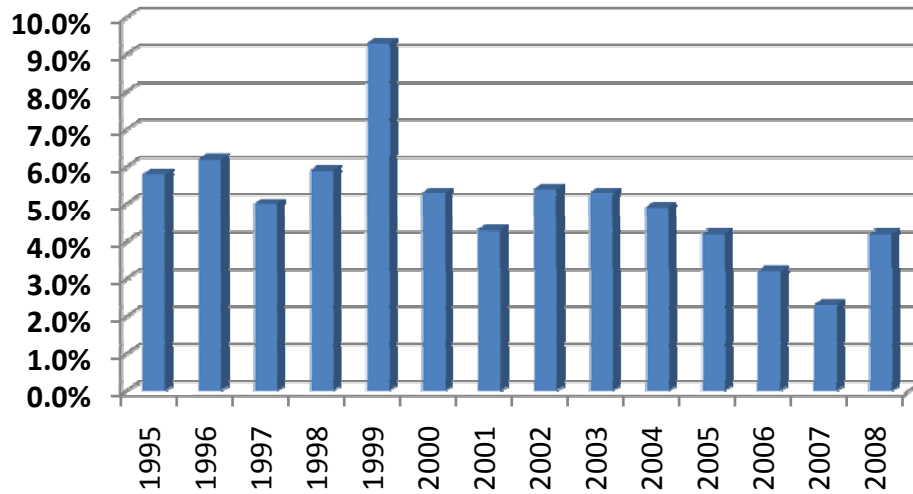
← Training and Outreach Center Opened

Dual Enrollment is a Priority for NMJC:

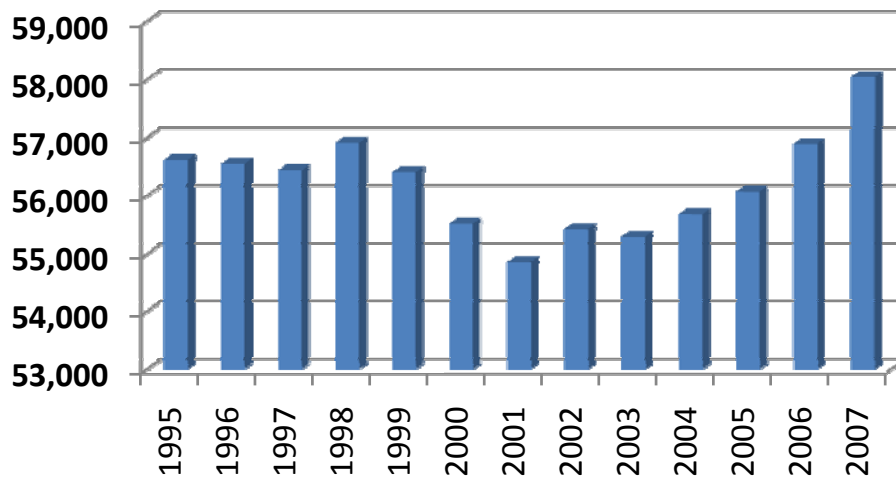
**Lea County High School Students Served by NMJC
ACT Academy (former), iTV and Dual Enrollment**



Lea County Unemployment Rate

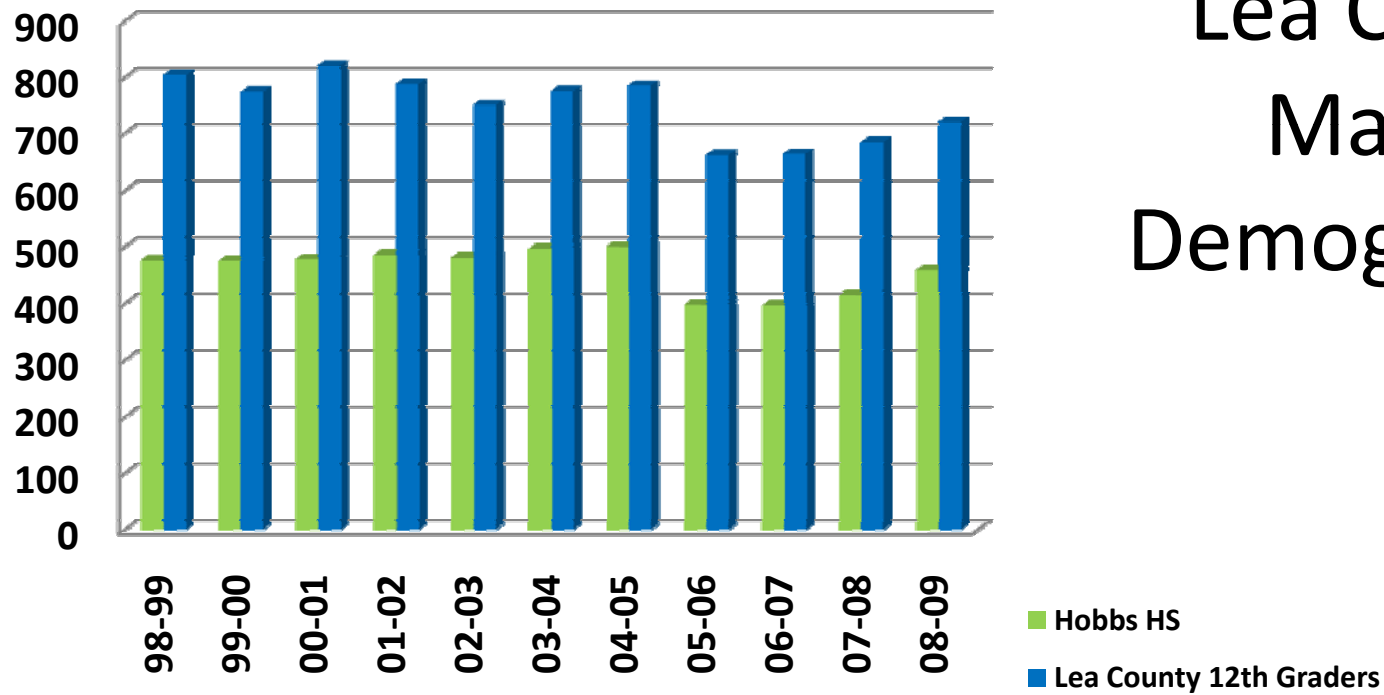


Lea County Census



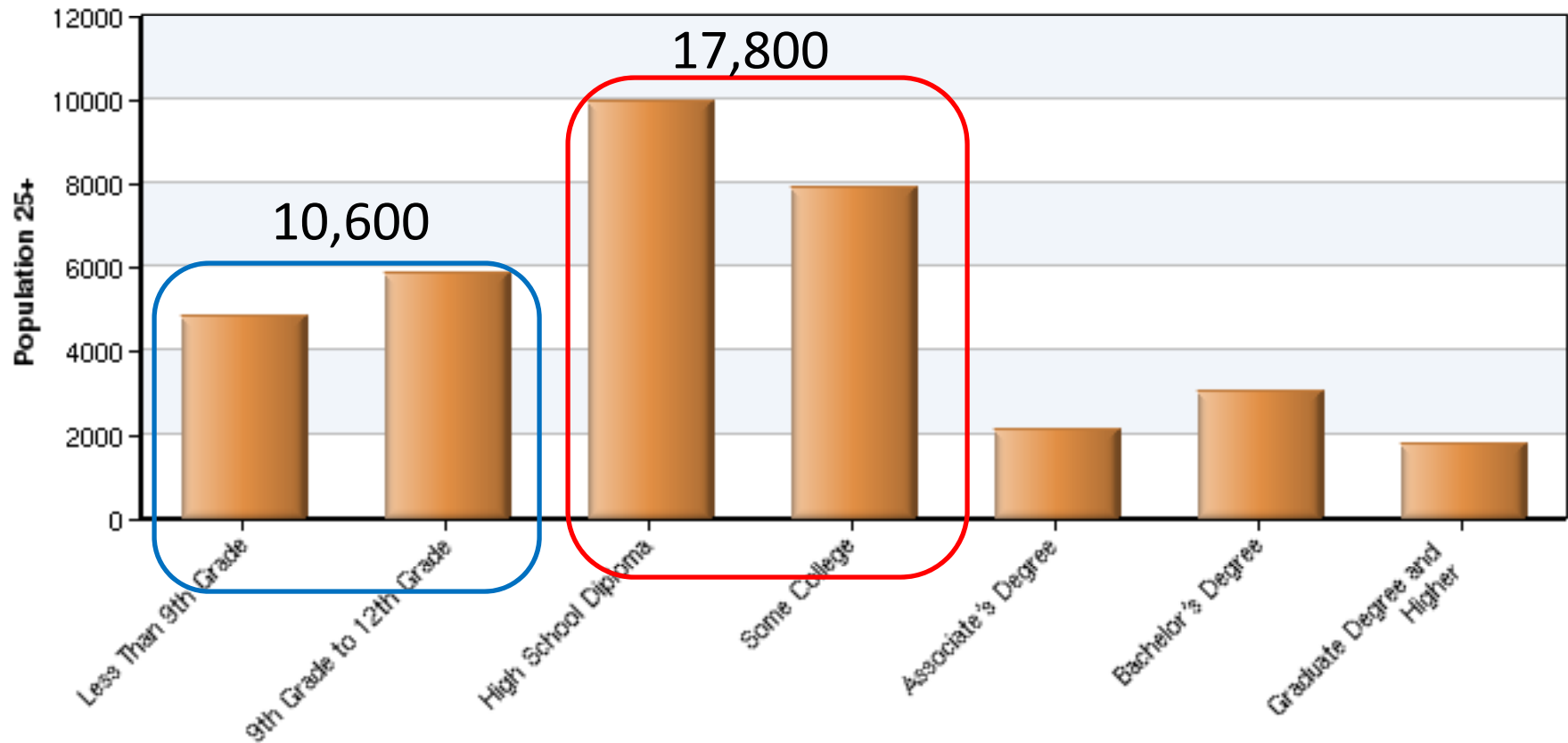
Lea County Market Demographics

Lea County 12th Grade School Population

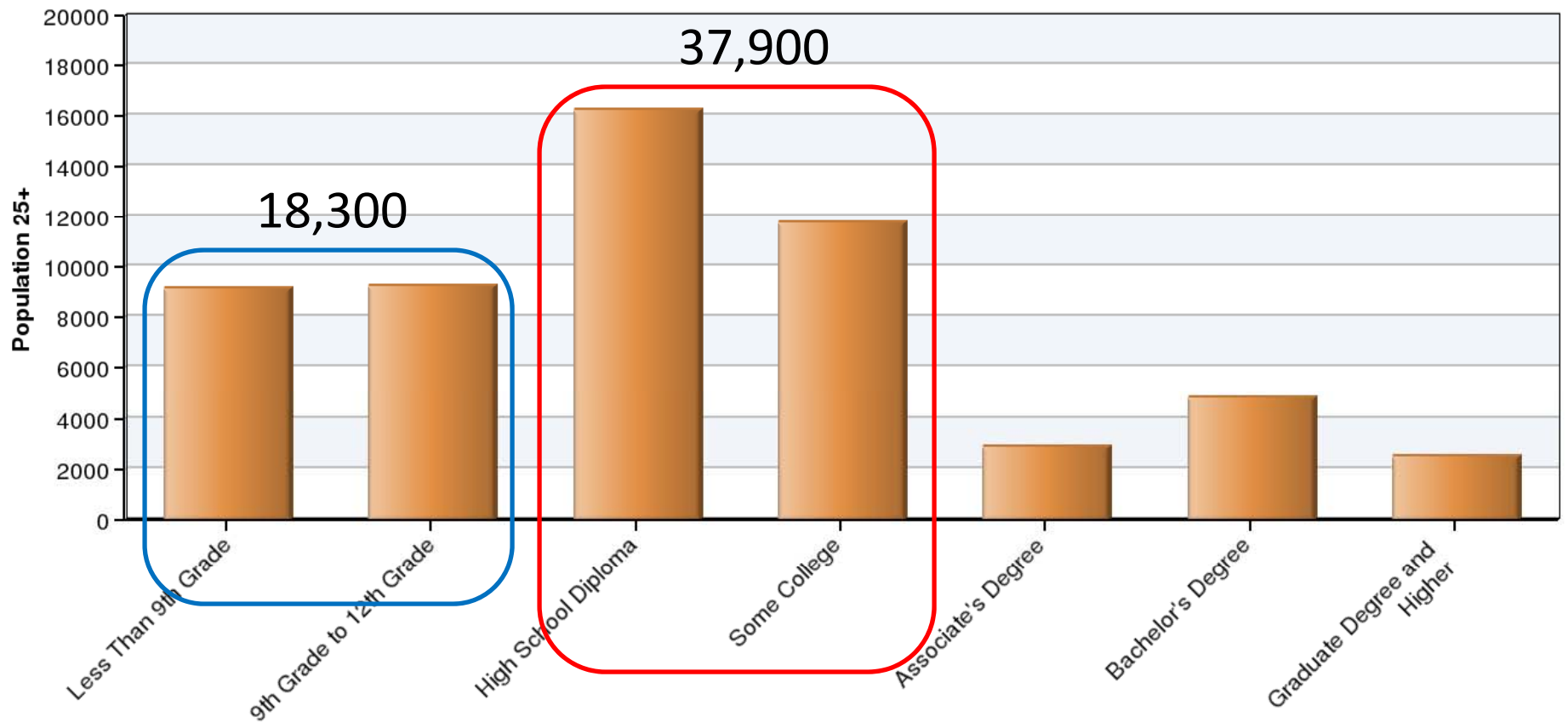


Lea County Market Demographics

Education Attainment of Adults over the age of 25 in Lea County



Education Attainment of Adults over the age of 25 in Lea, Yoakum, Gaines and Andrews Counties



Measuring Progress and Benchmarking

Measuring Progress and Benchmarking

Evaluate Performance

Identify Opportunities

Reality Check

Noel-Levitz Student Satisfaction Inventory 2005 v. 2009

	Spring 2009		Spring 2005		Mean Difference
	Importance	Satisfaction	Importance	Satisfaction	
Academic					
Advising/Counseling	6.19	5.47	6.00	5.23	0.24**
Safety and Security	6.09	5.47	5.94	5.27	0.20**
Campus Support					
Services	5.55	5.02	5.41	4.86	0.16*
Responsiveness to					
Diverse Populations		5.66		5.51	0.15
Registration					
Effectiveness	6.18	5.64	6.07	5.49	0.15*
Instructional					
Effectiveness	6.21	5.49	6.03	5.39	0.10
Student Centeredness	6.08	5.51	5.91	5.43	0.08
Academic Services	6.04	5.52	5.98	5.44	0.08
Concern for the					
Individual	6.14	5.42	6.00	5.34	0.08
Campus Climate	6.04	5.42	5.89	5.35	0.07
Admissions /Financial					
Aid	6.05	5.36	5.99	5.30	0.06
Service Excellence	5.99	5.36	5.92	5.32	0.04

Noel-Levitz Student Satisfaction Inventory 2005 v. 2009

	Spring 2009		Spring 2005		Mean Difference
	Importance	Satisfaction	Importance	Satisfaction	
Academic					
Advising/Counseling	6.19	5.47	6.00	5.23	0.24**
Safety and Security	6.09	5.47	5.94	5.27	0.20**
Campus Support					
Services	5.55	5.02	5.41	4.86	0.16*
Responsiveness to Diverse Populations		5.66		5.51	0.15
Registration					
Effectiveness	6.18	5.64	6.07	5.49	0.15*
Instructional					
Effectiveness	6.21	5.49	6.03	5.39	0.10
Student Centeredness	6.08	5.51	5.91	5.43	0.08
Academic Services	6.04	5.52	5.98	5.44	0.08
Concern for the Individual	6.14	5.42	6.00	5.34	0.08
Campus Climate	6.04	5.42	5.89	5.35	0.07
Admissions /Financial					
Aid	6.05	5.36	5.99	5.30	0.06
Service Excellence	5.99	5.36	5.92	5.32	0.04

NMJC Student Satisfaction Improved in Every Category



Noel-Levitz Student Satisfaction Inventory 2005 v. 2009

	Spring 2009		Spring 2005		Mean Difference
	Importance	Satisfaction	Importance	Satisfaction	
Academic Advising/Counseling	6.19	5.47	6.00	5.23	0.24**
Safety and Security	6.09	5.47	5.94	5.27	0.20**
Campus Support Services	5.55	5.02	5.41	4.86	0.16*
Responsiveness to Diverse Populations		5.66		5.51	0.15
Registration Effectiveness	6.18	5.64	6.07	5.49	0.15*
Instructional Effectiveness	6.21	5.49	6.03	5.39	0.10
Student Centeredness	6.08	5.51	5.91	5.43	0.08
Academic Services	6.04	5.52	5.98	5.44	0.08
Concern for the Individual	6.14	5.42	6.00	5.34	0.08
Campus Climate	6.04	5.42	5.89	5.35	0.07
Admissions /Financial Aid	6.05	5.36	5.99	5.30	0.06
Service Excellence	5.99	5.36	5.92	5.32	0.04

Ben Alexander Student Services Center Opened in 2005

Noel-Levitz Student Satisfaction: NMJC vs. National

	NMJC		National		Mean Difference
	Importance	Satisfaction	Importance	Satisfaction	
Safety and Security	6.09	5.47	5.98	4.97	0.50***
Academic Advising/ Counseling	6.19	5.47	6.11	5.19	0.28***
Admissions /Financial Aid	6.05	5.36	6.01	5.10	0.26***
Registration Effectiveness	6.18	5.64	6.14	5.39	0.25***
Responsiveness to Diverse Populations		5.66		5.43	0.23***
Concern for the Individual	6.14	5.42	6.07	5.21	0.21***
Student Centeredness	6.08	5.51	5.96	5.34	0.17**
Campus Climate	6.04	5.42	5.95	5.27	0.15**
Service Excellence	5.99	5.36	5.94	5.23	0.13*
Instructional Effectiveness	6.21	5.49	6.16	5.38	0.11*
Academic Services	6.04	5.52	6.03	5.42	0.10
Campus Support Services	5.55	5.02	5.44	4.94	0.08

Noel-Levitz Student Satisfaction: NMJC vs. National

	NMJC		National		Mean Difference
	Importance	Satisfaction	Importance	Satisfaction	
Safety and Security	6.09	5.47	5.98	4.97	0.50***
Academic Advising/ Counseling	6.19	5.47	6.11	5.19	0.28***
Admissions /Financial Aid	6.05	5.36	6.01	5.10	0.26***
Registration Effectiveness	6.18	5.64	6.14	5.39	0.25***
Responsiveness to Diverse Populations		5.66		5.43	0.23***
Concern for the Individual	6.14	5.42	6.07	5.21	0.21***
Student Centeredness	6.08	5.51	5.96	5.34	0.17**
Campus Climate	6.04	5.42	5.95	5.27	0.15**
Service Excellence	5.99	5.36	5.94	5.23	0.13*
Instructional Effectiveness	6.21	5.49	6.16	5.38	0.11*
Academic Services	6.04	5.52	6.03	5.42	0.10
Campus Support Services	5.55	5.02	5.44	4.94	0.08

NMJC Student Satisfaction Above Nt'l in Every Category



Peer Benchmark Groups

- HED Peer Group
 - Carl Sandburg College
 - Lower Columbia College
 - Darton College
 - Grayson County College
 - Hutchinson Community College
 - Louisiana State Univ. – Eunice
 - Iowa Lakes Community College
 - Sheridan College
 - Temple College
 - Reading Area Community College
 - Midland College
 - Paris Junior College
- NMJC Regional Peers
 - Odessa College
 - Midland College
 - South Plains College
 - Weatherford College
 - San Juan College

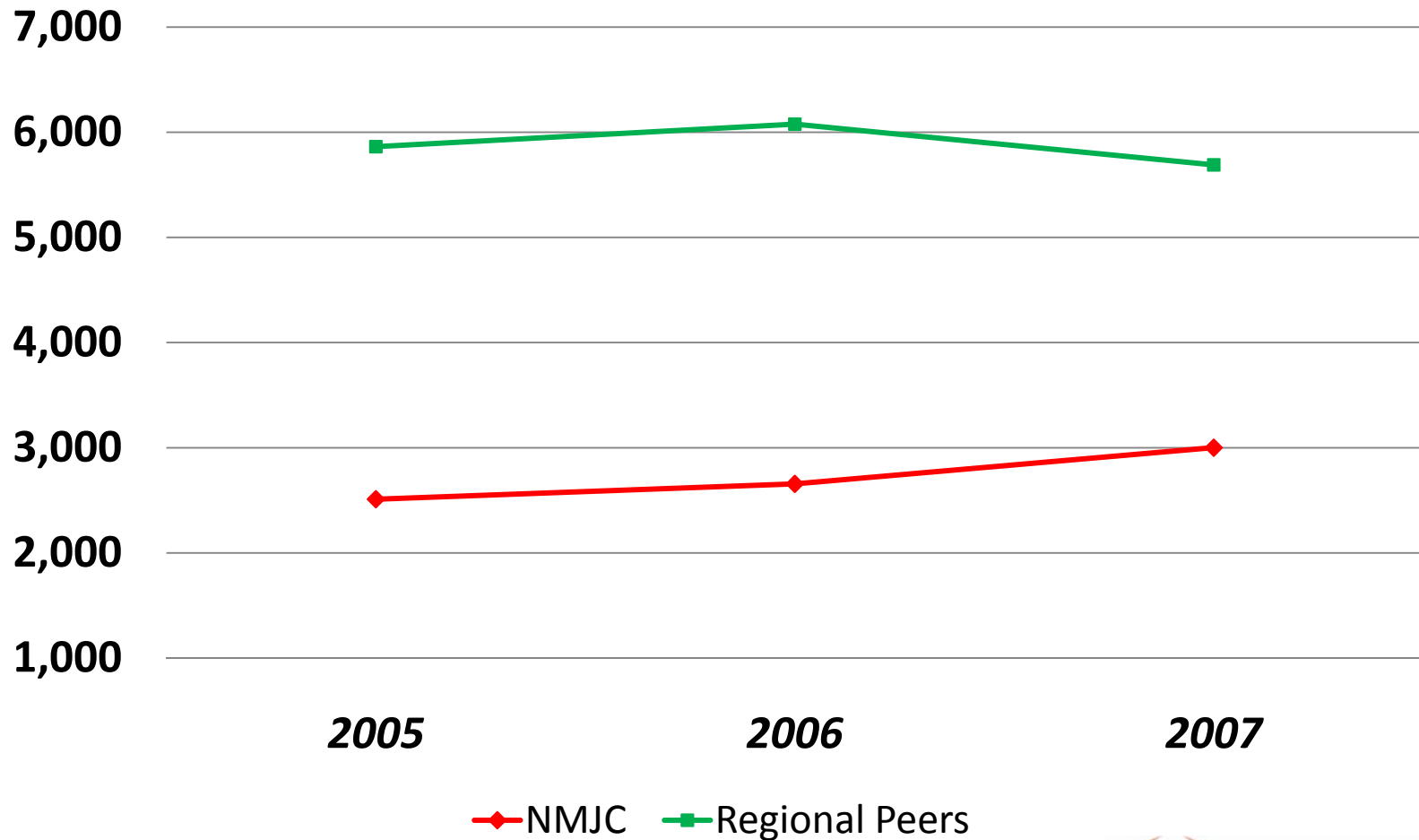
Benchmarking Against HED Peers

	NMJC	HED Peers
Graduation Rate (150% of time)	24%	21%
Full-time Retention	49%	53%
Part-time Retention	34%	38%
Expenses as % of Total		
Instruction	85%	87%
Institutional Support	76%	69%
Expenses per FTE		
Instruction	\$4,177	\$4,020
Institutional Support	\$1,518	\$1,402
Student Services	\$1,868	\$1,000

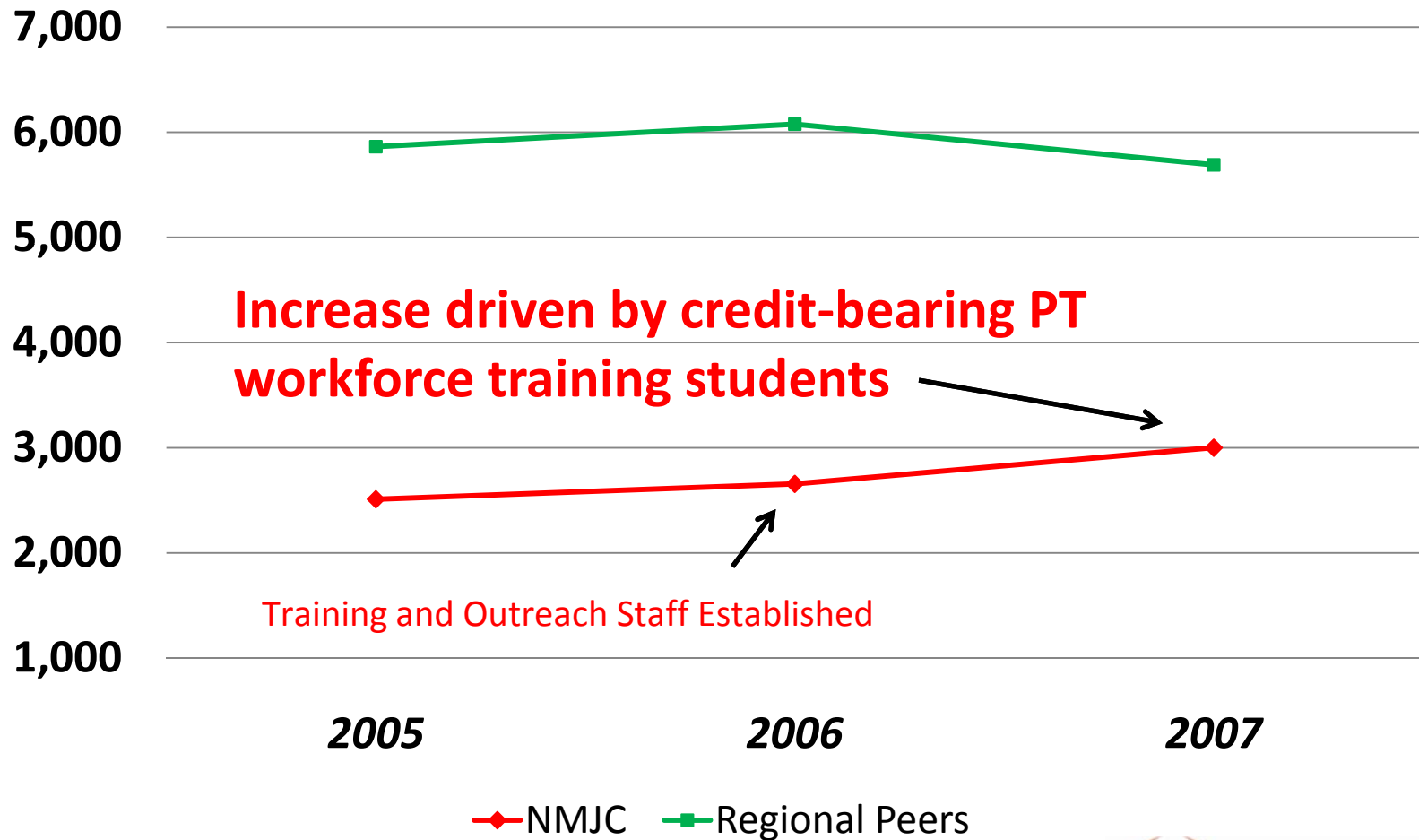
Benchmarking Against HED Peers

	NMJC	HED Peers
Tuition and Fees		
2007-2008	\$1,032	\$2,141
2006-2007	\$850	\$2,029
2005-2006	\$601	\$1,964

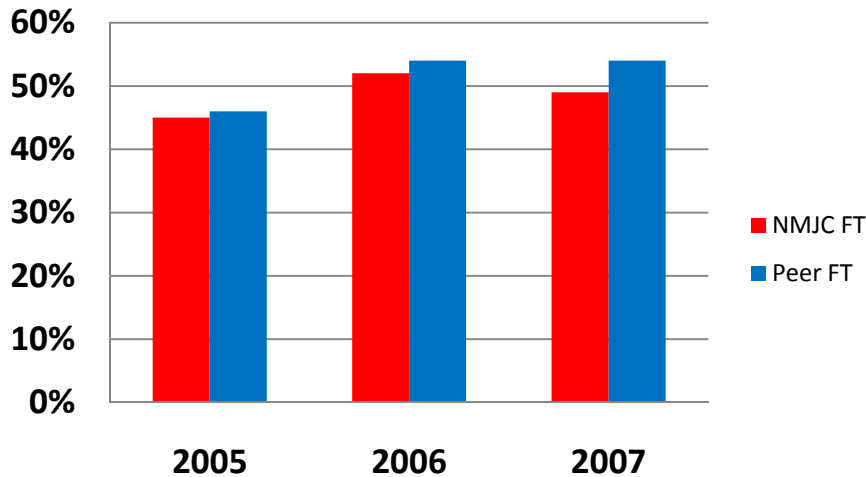
Headcount (FT and PT) Enrollment NMJC v Regional Peers



Headcount (FT and PT) Enrollment NMJC v Regional Peers

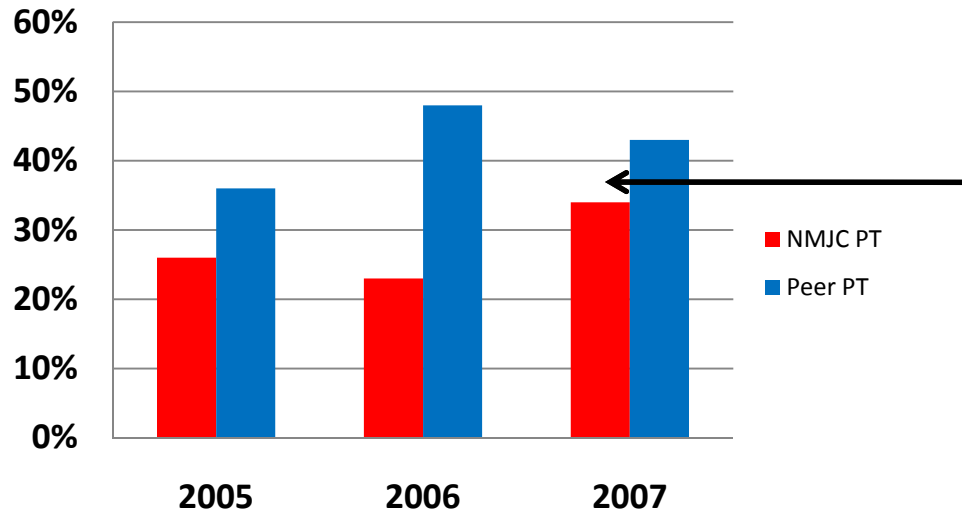


Full-time Student Retention Rate



Benchmarking: Retention Rates

Part-time Student Retention Rate



NMJC v. Regional Peers

Need to understand difference in types of students – NMJC Workforce Focus

Key messages:

- Plans take time to become reality (particularly when capital funding involved)
 - Equine Center and Oil & Gas Training
 - Master Plan and Strategic Plan drive the process
- Transitory workers = unique enrollment dynamic
 - 5% unemployment level seems to be key
 - Good times push enrollment down quickly
 - Bad times affect enrollment 2-3 years later

Key messages – con't:

- Headcount is important but Student Credit Hours (SCH) drive formula funding
- New modes of delivery (iTV, Online and Dual credit) have been critical decisions
- NMJC has a sizeable, available market
- NMJC compares favorably to peers
- We are seeking...and using...information/data

Thank you!

